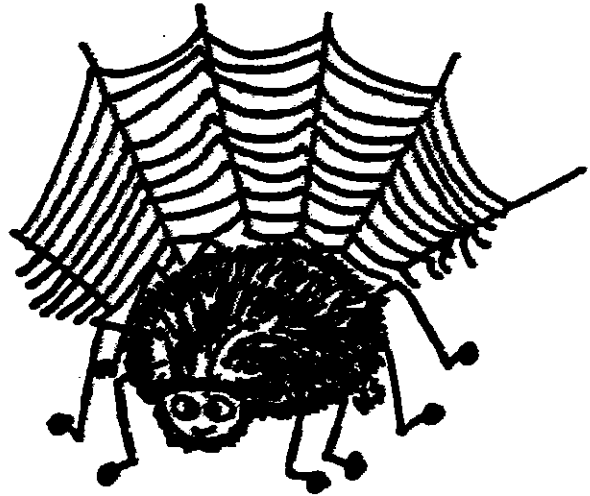


SOME QUESTIONS



- ▶ Do you like Fulghum's lead?
- ▶ What makes it work?
- ▶ Did you notice that Fulghum doesn't introduce the spider right away? Why do you suppose that is?
- ▶ The neighbor is going about her business, doing all sorts of homely little chores, when suddenly
...AAAAAAGGGGGGGGGGGHHHHHHHH!!!! Does this work? Why?
- ▶ Is Fulghum's own lead best of all-or do you like one of your own better? Why?
- ▶ Did you use any of the same strategies Fulghum used?